



CTF

Countertop Freezer & Ice Cream Freezer

500 S. Falkenburg Road
Suite 200 | Tampa, FL 33619
800.441.4014 | 813.870.0340
www.excellenceindustries.com

The company reserves the right to change the design and/or specifications of these products without notice. Printed in the USA.
Current version 8.19

KEY ASPECTS

SPECIAL FEATURES:

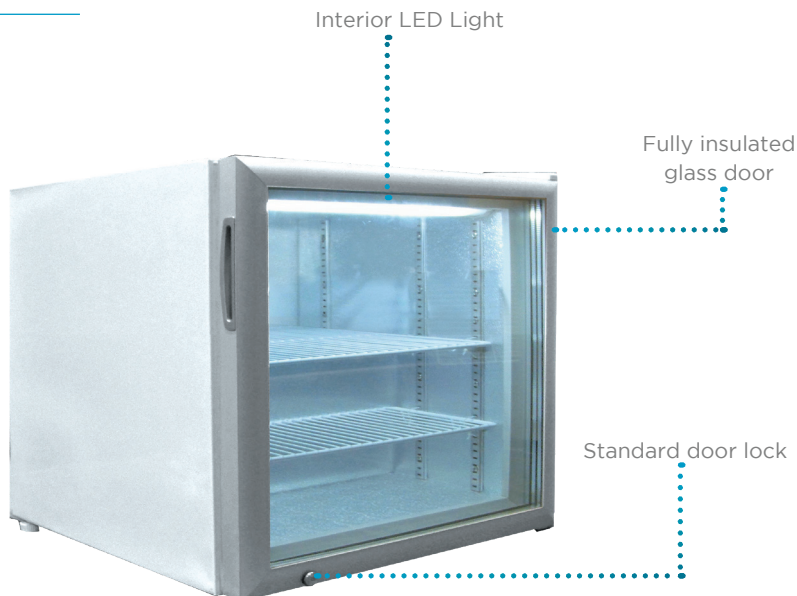
- 3 adjustable shelves (CTF-3HC)
- 2 adjustable shelves (CTF-2HC)
- Right hinge self closing door
- Environmentally friendly hydrocarbon refrigerant

OPTIONS:

- Lighted door graphic
- Graphics
- Left hinge units

DOE LISTED

Complies with 2017 DOE standards for commercial freezer and ice cream freezer



Optional lighted door graphic



Double Combo-MCT-4HC with 2 optional CTF-3HC



Combo MCT-2HC with one optional CTF-3HC

TECHNICAL SUMMARY

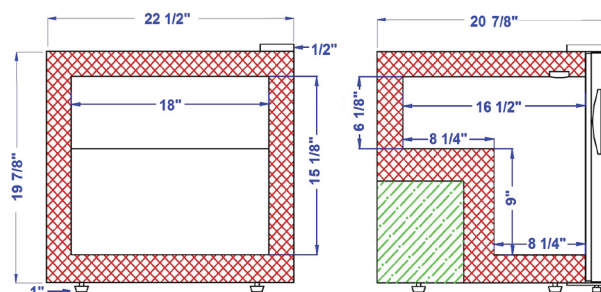
| MODEL | SIZE | | | | ELECTRICAL | | | REFRIGERATION | | OTHER | |
|---------|--|------------|-------------------|--------------------------|------------------|--------------|---------------|---------------|----------------|-------------------------|--------------------|
| | Dimensions (inches)* Width x Depth x Height | Cubic Feet | Net Weight (lbs.) | Shipping Weight (lbs.)** | Voltage/Hz/Phase | Running Amps | Compressor HP | Refrigerant | Temperature | No. of Optional Baskets | Container Quantity |
| CTF-2HC | 22 1/2 x 20 7/8 x 21 3/8 | 1.9 | 76 | 84 | 115/60/1 | 2.1 | 1/4 | R-290 | -15°F to +15°F | 2 | 304 |
| CTF-3HC | 24 x 21 1/8 x 27 1/8 | 3.4 | 95 | 103 | 115/60/1 | 3.6 | 2/5 | R-290 | -15°F to +15°F | 3 | 171 |

*Dimensions are all nominal lengths

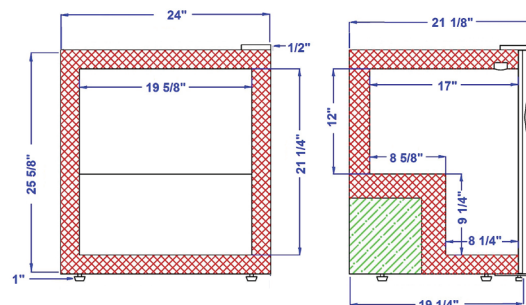
**Does not include weight of pallets when needed



CTF-2HC



CTF-3HC



500 S. Falkenburg Road
Suite 200 | Tampa, FL 33619
800.441.4014 | 813.870.0340
www.excellenceindustries.com
ver. 8.19