



KM-420M_J(Z)

SLIM-LINE MODULAR CRESCENT CUBER

KM-420M_J(Z)

06/08/22

Item # 13674

W x D x H
22" x 27^{3/8}" x 28"

KM|EDGE
ICE MACHINE SERIES

Air-Cooled

KM-420MAJ ★

Air-cooled model
shown on optional bin: B-300



Water-Cooled

KM-420MWJ

Remote Air-Cooled

KM-420MRJZ ★



Item #: _____
Project: _____
Qty: _____
AIA#: _____

Features

- ▶ Individual crescent cube
- ▶ Factory-installed ultrasonic bin control can be adjusted on site
- ▶ Simple, one-hour cleaning process



- Durable construction with fewer parts
- Self-diagnostic programming automatically adjusts to changing conditions
- Snap fit parts for easy cleaning
- Stainless steel double-sided evaporator
- CycleSaver™ design
- Protected by H-GUARD Plus Antimicrobial Agent
- EverCheck™ alert system
- Removable air filters (air-cooled model only)
- R-404A Refrigerant

Available on Bins/Dispensers:

B-250SF B-500/SF B-800SF B-1150SS DB-130H
B-300SF B-700SF B-900SF B-1300SS DB-200H
DM-200B

Top kit may be required. See Bin Spec Sheets.

Warranty:

3 Year Parts & Labor on entire machine 5 Year Parts & Labor on evaporator
5 Year Parts on Compressor; air-cooled condenser coil
Valid in United States, Canada, Puerto Rico and U.S. Territories. Contact factory for warranty in other countries.

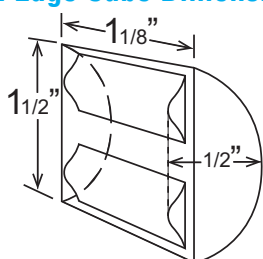
Shipping: (LxWxH) 33" x 25.25" x 34.5" Volume: 16.64ft³

			ICE PRODUCTION		WATER USAGE		ELECTRICAL							
Condenser	Model		Air / Water Temp Lbs. per 24 hours		Potable	Condenser	kWh Used	Min. Circuit	Amperage	Voltage	Circuit	Heat Rejection BTU/hr.	Refrigerant Charge Amount	Net / Ship Weight (lbs.)
			70°/ 50°F	90°/ 70°F	Gal. per 100 lbs. 90°/ 70°F	Gal. per 100 lbs. 90°/ 70°F	per 100 lbs. 90°/ 70°F	Amp - Max. Fuse/Breaker			Wires (including ground)			
	Air	KM-420MAJ ★	508	440	17.0	N/A	5.3	20A	10.6A	115V/60/1	3	6,600	1 lb. 10.8 oz.	131 / 175
	Water	KM-420MWJ	472	435	19.0	95	4.7	20A	8.45A	115V/60/1	3	6,300	12.7 oz.	127 / 175
	Remote	KM-420MRJZ ★	521	460	16.0	N/A	5.0	20A	12.05A	115V/60/1	3	6,200	2 lb. 4.7 oz. 4 lb. 2.7 oz. †	122 / 175

† (with condenser)

Power cord not included. Must be hard-wired at site.

KM Edge Cube Dimensions†



† approximate size in inches, image not to scale

Operating Limits

- Ambient Temp Range 45 - 100°F
- Water Temp Range 45 - 90°F
- Water Pressure 10 - 113 PSIG
- Voltage Range 104 - 127V

Service

- Panels easily removed and all components accessible for service.
- Removable/cleanable air filters. (Air-cooled model only)
- Allow 6" (15 cm) clearance at rear, sides, and top for proper air circulation and ease of maintenance/service.

Plumbing

- Ice maker water supply line: minimum 1/4" nominal ID copper water tubing or equivalent
- Ice maker drain line: minimum 3/4" nominal ID hard pipe or equivalent
- Condenser water supply line: minimum 1/4" nominal ID copper water tubing or equivalent
- Condenser drain/return line: minimum 1/4" nominal ID hard pipe (open drain system) or copper water tubing (closed loop system) or equivalent

Water Filter

Please refer to water filter specification sheet for recommendations.

Hoshizaki reserves the right to change specifications without notice.



KM-420M_J(Z)

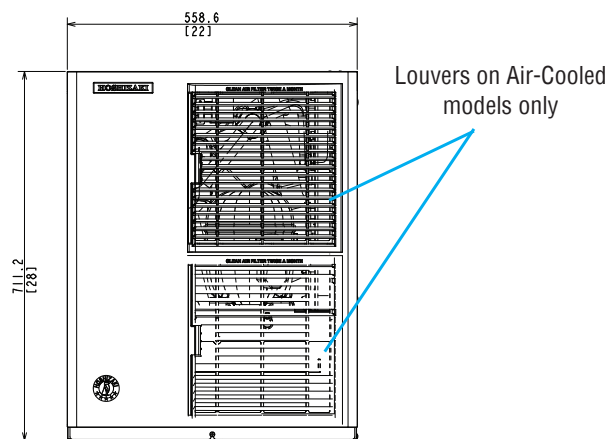
SLIM-LINE MODULAR CRESCENT CUBER

KM-420M_J(Z)

06/08/22

Item # 13674

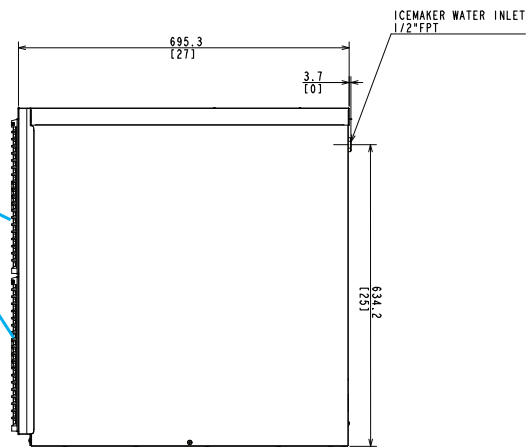
FRONT VIEW



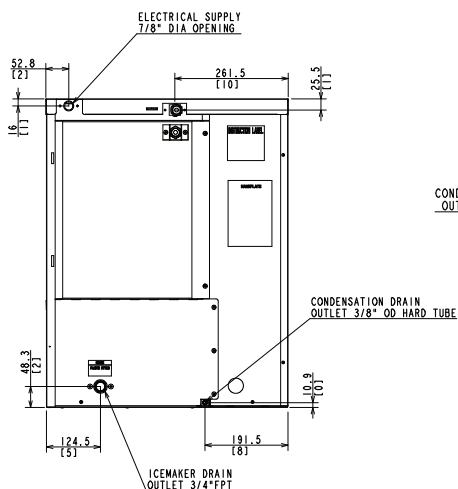
SIDE VIEW

Louvers on Air-Cooled models only

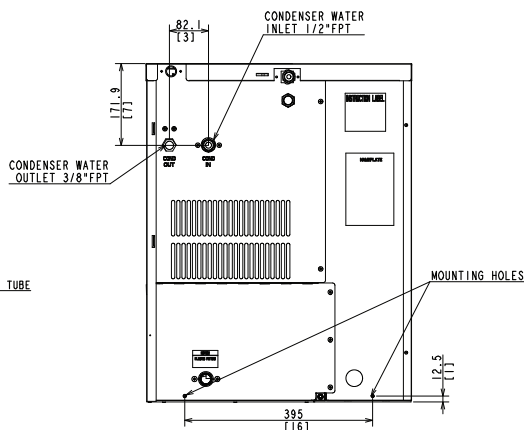
Front



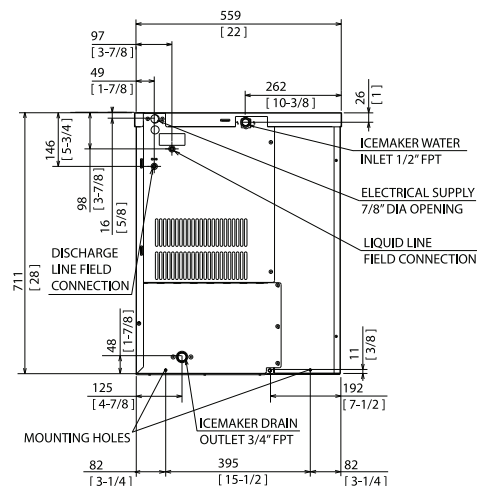
REAR VIEW



AIR-COOLED

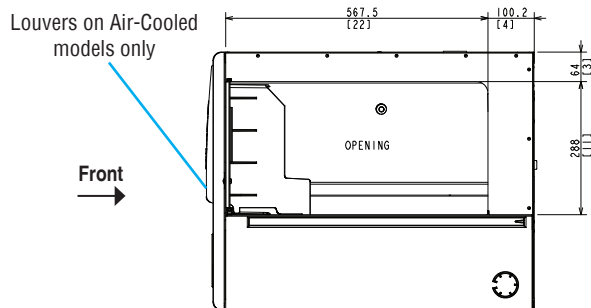


WATER-COOLED



REMOTE AIR-COOLED

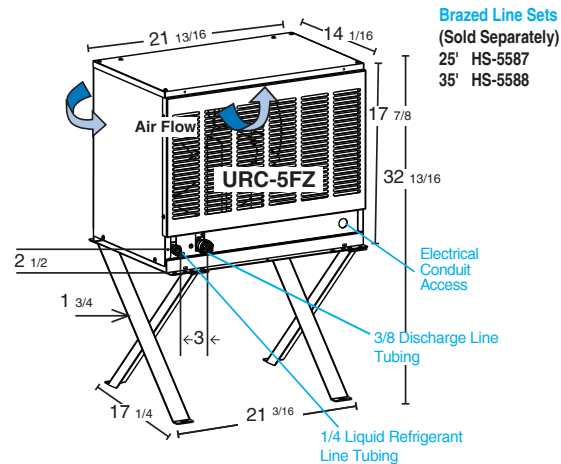
BOTTOM VIEW



URC-5FZ Remote Condenser (Sold Separately)

(W x D x H) 21^{13/16} x 14^{1/16} x 32^{13/16}

For Use with KM-420MRJZ



Brazed Line Sets

(Sold Separately)

25' HS-5587

35' HS-5588

Voltage supply for ice maker and condensing unit are separate.