

**VALPRO COMMERCIAL REFRIGERATION**

5256 Eagle Trail Drive

Tampa, FL 33634

813-502-0300

Toll Free 1-888-VALPRO-8

www.ValproRefrigeration.comsales@ValproRefrigeration.com

PROJECT:

MODEL #:

ITEM #:

QTY:

AVAILABLE W/H:

APPROVAL:

GLASS DOOR MERCHANDISERMODEL: **VP2F-48****SWING DOOR
FREEZER**

Valpro glass door merchandisers can be manufactured to your specifications with options for black or white exterior, slide or swing doors, custom illuminated sign panels and side wall decals. Our line of merchandisers utilize reliable energy efficient technology and provide an attractive well illuminated point of purchase while maintaining precise temperatures. All units feature an oversized balanced refrigeration system allowing rapid cooling, and better reliability. All our merchandisers are UL Energy Verified and deliver the lowest operating costs. All Valpro products are manufactured under strict ISO9001 standards for quality assurance, and to consistently deliver to our customers products that satisfy all expectations. All our products are operated, extensively monitored, and undergo rigorous inspection prior to packaging and shipping.

FEATURES

- Energy saving vacuum-insulated triple pane low E-glass doors
- Bright LED full door length internal cabinet lighting
- Bright LED back-lit front panel
- Standard door locks for added security
- Self-closing doors
- Snap-in magnetic door gaskets removable and replaceable without tools for ease of cleaning
- Powder coated steel exterior and interior
- Stainless Steel interior bottom
- Eight heavy duty wire shelves supported by pilasters for easy adjustability', 1/2" increments
- Four 1" wheels with front leg levelers
- High density foamed in-place CFC free polyurethane insulation
- Front mounted electronic thermostat digitally controlled temperature system maintains optimum temperature with easily viewed LED display
- Removable bottom grill slide-out condensing unit for easy maintenance
- Self contained oversized balanced refrigeration system provides better reliability and performance
- UL Energy Verified and tested to NSF Standard 7

**Energy
Verified**



Model:

VP2F-48

Glass Door Merchandiser Freezer

Two Section - Swing Door - 48 cu. ft. Capacity

Technical Data

Dimensional Data

Exterior Dimensions	54"W x 31.9"D x 79.5"H
Interior Dimensions	50.2"W x 30"D x 55.5"H
Net Storage Capacity	48 cu. ft.
Net Weight	476 lbs.
Crated Weight	566 lbs.
Shipping Dimensions	55.5"W x 34.8"D x 84.6"H

Refrigeration Data

Temperature Range	-10°F to +10°F
Refrigerant	R-404A
Refrigerating System	Capillary Tube
Temperature Controller	Digital
Horsepower	1

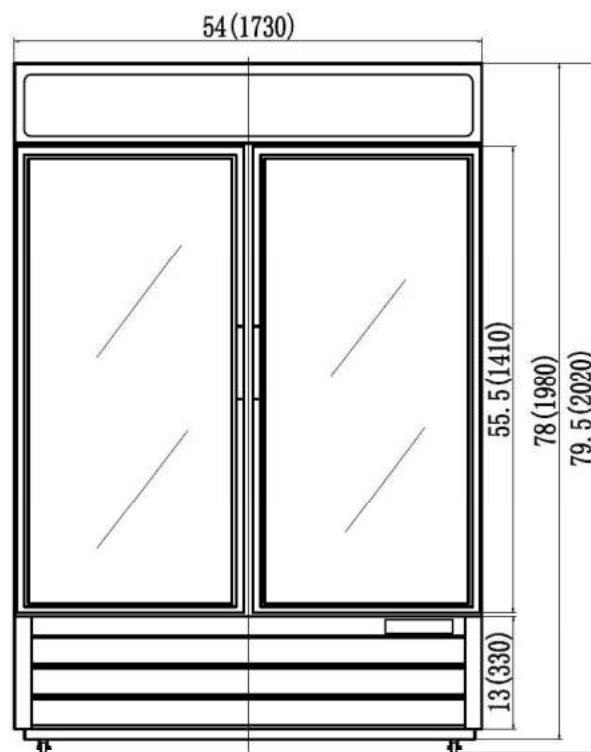
Construction Data

Exterior Material	Powder Coated Steel
Interior Floor Material	304 Series Stainless Steel
Interior Wall Material	White Powder Coated Steel
Insulation	CFC Free Polyurethane
Shelves	8 Heavy Duty Epoxy Coated

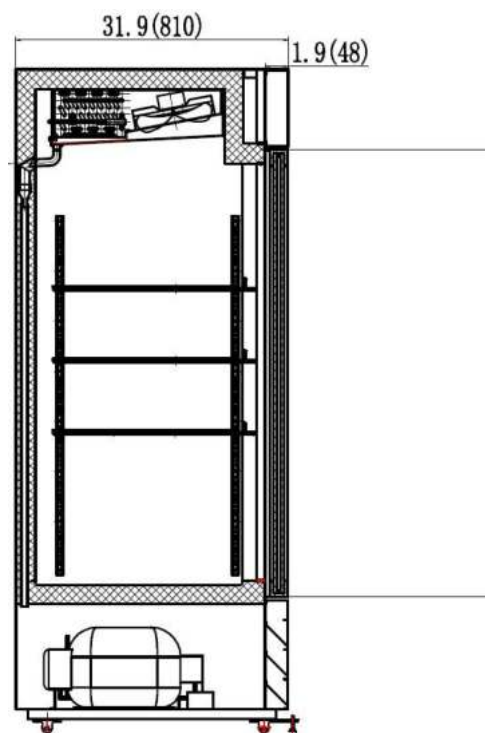
Electrical Data

Amps	12
Voltage/Frequency/Phase	115V/60Hz/1
Plug Type	NEMA 5-15P
Electrical Cord Length	10 ft.

FRONT VIEW



SIDE VIEW



Valpro Commercial Refrigeration
5256 Eagle Trail Drive
Tampa, FL 33634



Tel: 813-502-0300
1-888-VALPRO-8
www.valprorefrigeration.com