

35 Series – Double Duty Red Meat

- PRODUCT SPECIFICATIONS SHEETS



- Cases are designed to operate at 75 degrees Fahrenheit and 55% relative humidity

Self-Contained Remote	SC-CMS35-4 R-CMS35-4	SC-CMS35-6 R-CMS35-6	SC-CMS35-8 R-CMS35-8	SC-CMS35-10 R-CMS35-10	SC-CMS35-12 R-CMS35-12
Length	50"	71"	95"	119"	143"
Height	52"	52"	52"	52"	52"
Depth	35-1/2"	35-1/2"	35-1/2"	35-1/2"	35-1/2"
Depth w/bottom door	38-1/2"	N/A	N/A	N/A	N/A
(Dimensions are +/-1/4")					

- Specification subject to change without notice

35 Series – Double Duty Red Meat

Standard Specifications and Optional Features

CONSTRUCTION UL Classified to ANSI/NSF 7 Foamed in place CFC free foam Triple pane insulated front glass-26"H Heavy gauge steel super structure Bottom storage Drain is included for cleaning	FINISHES Satin finish extrusion on doors and door tracks Designer white exterior front and ends Stainless steel mirror trim Stainless steel heavy gauge top – 17" W Designer white exterior rear 1" Boston Bumper Gray
INTERIOR Designer white interior ends White aluminum floor (<i>bottom storage area</i>) Air insulated baffle (<i>prevents moisture from dripping into display area</i>)	REFRIGERATION Copevap system (<i>eliminates need for condensate pan</i>) R134a expansion valve system Gravity coil located at <i>inside top of unit and bottom storage area</i> Humidity coil located at main deck Self contained system Automatic defrost controlled by time clock-(<i>self contained units only</i>) Temperature control maintains constant temperatures Remotes available
EXTERIOR Double pane rear removable doors Newly designed rear compression door jamb Removable front grille allows for cleaning Removable rear grille for easy servicing	LIGHTING 2 Rows of T12 lighting at top of unit
ELECTRICAL REQUIREMENTS 115V/60Hz/1Ph Unit must be hard wired UL/CUL listed 115V-12AMP general purpose receptacle (<i>wired separately</i>)	<p><i>Important Note: All refrigerated cases are designed to operate in an environment of 75 degrees and 55% relative humidity.</i></p> <p><i>Important Note: Product must be cooled before being displayed within the case.</i></p>

OPTIONAL FEATURES

Scale stand Paper cutter Paint, laminate or stainless steel Mirrored doors Stainless steel mezzanine shelf Drop work shelf	Front bumpers 1" or 3" Door locks Digital thermometer Pass thru front doors 4', 6' and 8 foot only Meat platters Red meat bulbs
---	--



35 Series – Double Duty Red Meat

Technical Data

Model	Self contained	SC-CMS35-4	SC-CMS35-6	SC-CMS35-8	SC-CMS35-10	SC-CMS35-12
	Remote	R-CMS35-4	R-CMS35-6	R-CMS35-8	R-CMS35-10	R-CMS35-12
Length Height Depth Depth with bottom door (Dimensions are +/- 1/4")		50" 52" 35-1/2" 38-1/2"	71" 52" 35-1/2" N/A	95" 52" 35-1/2" N/A	119" 52" 35-1/2" N/A	143" 52" 35-1/2" N/A
Operating temperature Refrigerant (expansion valve) Compressor size HP Temperature control settings @ 75°F, 55%RH	Self contained Self contained	34°F to 36°F R134a 1/4	34°F to 36°F R134a 1/3	34°F to 36°F R134a 1/2	34°F to 36°F R134a 1/2	34°F to 36°F R134a 3/4
Defrost per day (24 hours) BTU's at +20°F Evap. Temp. Voltage Amperage Amperage, lights only Cord and plug	CUT IN CUT OUT Air Defrost Remote Self contained Remote	40 20 1 per day 1400 115V 6.0A 0.8A No	40 20 1 per day 2100 115V 8.7A 1.3A No	40 20 1 per day 2800 115V 11.2A 1.6A No	40 20 1 per day 3500 115v 13.8A 2.4A No	40 20 1 per day 4200 115V 17.4A 2.4A No
Exterior color Interior color Floors # of top doors Door size # of bottom doors # of coils Bottom storage Front glass # of main deck shelves Main deck size Cubic capacity (ft³) Mezzanine Shelf	Self contained Remote	White White White 2 19-3/16"X19-3/16" 1 external 2 3 Yes 26" X 45" 2 31-5/8"X22-1/4" 30 Optional	White White White 2 29-5/8"X19-3/16" 2 2 3 Yes 26" X 66" 3 31-5/8"X22-1/4" 45 Optional	White White White 4 19-3/16"X19-3/16" 2 4 3 Yes 26" X 90" 4 31-5/8"X22-1/4" 60 Optional	White White White 4 23-1/2"X19-3/16" 3 4 3 Yes 26" X 114" 5 31-5/8"X22-1/4" 75 Optional	White White White 4 29-5/8"X19-3/16" 4 4 3 Yes 26" X 138" 6 31-5/8"X22-1/4" 90 Optional

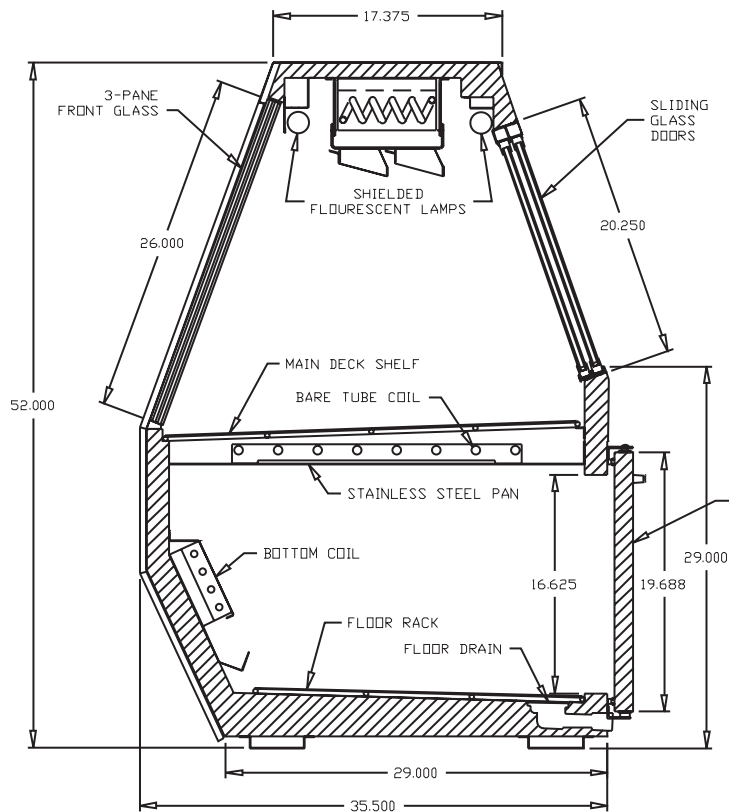
SHIPPING INFORMATION

Height		58"	58"	58"	58"	58"
Depth		44"	44"	44"	44"	44"
Length		61"	87"	109"	135"	157"
Gross weight	Self contained Remote	500# 460#	645# 595#	900# 845#	1230# 1175#	1344# 1295#
Cubic feet		90ft³	128ft³	160ft³	200ft³	231ft³

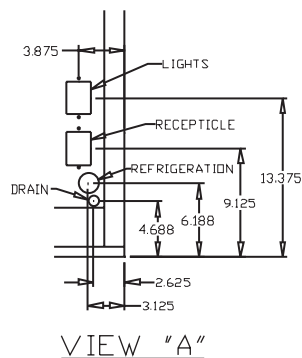
- Cases are designed to operate at 75 degrees Fahrenheit and 55% relative humidity
- Cases are equipped with drains; check your local building codes for connection requirements.
- Specification subject to change without notice

35 Series – Double Duty Red Meat

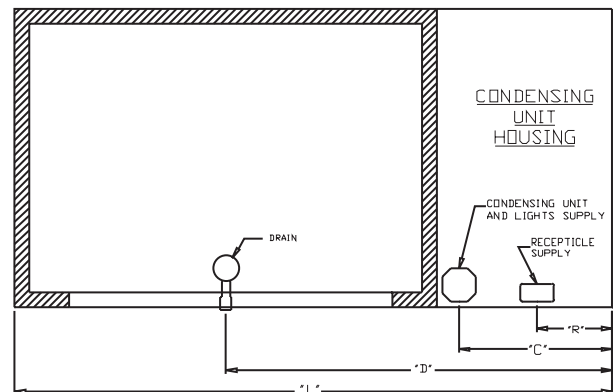
Technical Data • Side View • Plan View



Cross Section

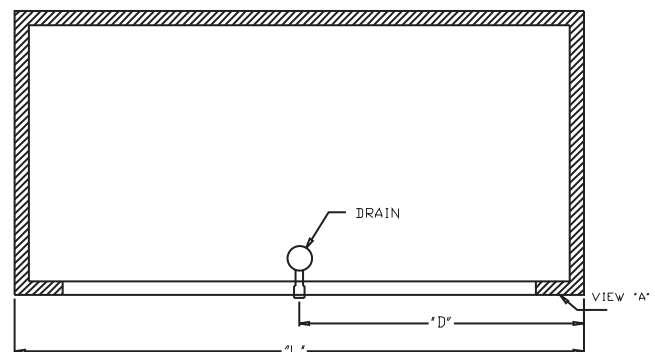


VIEW "A"



SIZE	"L"	"R"	"C"	"D"
4	50	25	25	33
6	71	9	18.250	45.875
8	95	9	18.250	57.875
10	119	9	18.250	69.875
12	143	9	18.250	81.875

Plan View Self-contained



SIZE	"L"	"D"
4	50	25
6	71	35.500
8	95	47.500
10	119	59.500
12	143	61.500

Plan View Remote