

**VALPRO COMMERCIAL REFRIGERATION**

5256 Eagle Trail Drive

Tampa, FL 33634

813-502-0300

Toll Free 1-888-VALPRO-8

www.ValproRefrigeration.com

sales@ValproRefrigeration.com

PROJECT:

MODEL #:

ITEM #:

QTY:

AVAILABLE W/H:

APPROVAL:

DIRECT DRAW BEER DISPENSER 24" MODEL: VPBD1

We are proud to introduce the beautifully constructed **Valpro VPBD1 direct draw beer cooler**. All our bar refrigeration equipment are manufactured with uncompromising quality, energy efficient technology, and standard premium features built in. All our direct draw beer coolers have full stainless steel interiors, solid foamed stainless steel tops with integrated drip tray drain. Our heavy duty commercial construction will provide many years of worry free service and delivers cost saving eco-friendly energy efficiency with more affordable running costs. This portable unit utilizes natural hydrocarbon R600A refrigerant as an environmentally responsible choice having low global warming potential and no potential for ozone depletion. All Valpro products are manufactured under strict ISO9001 standards for quality assurance, and to consistently deliver to our customers products that satisfy all expectations. All our products are operated, extensively monitored, and undergo rigorous inspection prior to packaging and shipping.

KEY FEATURES

- Solid foamed stainless steel counter top with integrated drip tray drain
- Full stainless steel interior
- Attractive black powder-matted galvanized steel exterior
- Self closing door with key lock
- Snap-in magnetic door gasket removable and replaceable without tools for ease of cleaning
- Cooled (cold air channeled) and insulated 3" diameter beer column for uniform beer temperature and reduced foaming for a perfect pour
- Single faucet on polished stainless steel tower
- Designed to hold 1 half barrel keg (15.5 gal.)
- Standard 2.5" wheels, make it easy to maneuver and clean underneath
- High density foamed in place CFC free insulation
- Over sized balanced refrigeration system uses environmentally friendly R600a hydrocarbon refrigerant with low GWP and zero ozone depletion
- Forced air cooling with large fan motor and fan blades for better air circulation
- Front mounted electronic thermostat digitally controlled temperature system maintains optimum temperature with easily viewed LED display
- Certified and tested to NSF Standard 7



Intertek



Intertek

WARRANTY
2 YEAR Parts & Labor
5 YEAR Compressor

Certified to ANSI/NSF 7 Standards



Model:
VPBD1

24" Direct Draw Beer Dispenser

1 Tower - 1 Tap

Technical Data

Dimensional Data

Exterior Dimensions	24.1"W x 29.9"D x 33.9"H
Keg Capacity	1 Half Barrel (15.5 gal.)
Storage Capacity Cu. ft	7.2
Crated Weight	161 lbs.
Shipping Dimensions	26.2"W x 34.6"D x 43.7"H

Refrigeration Data

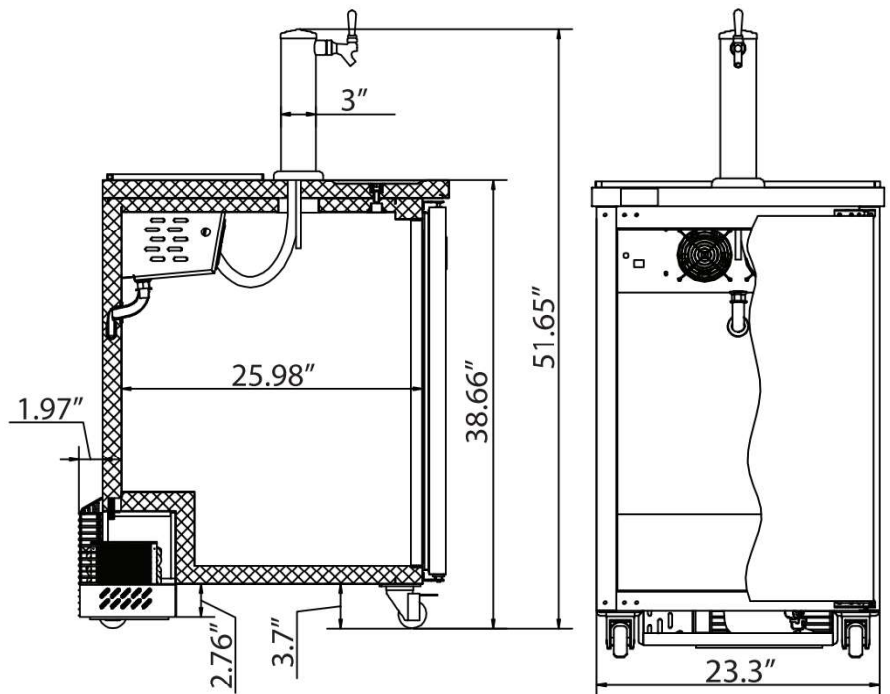
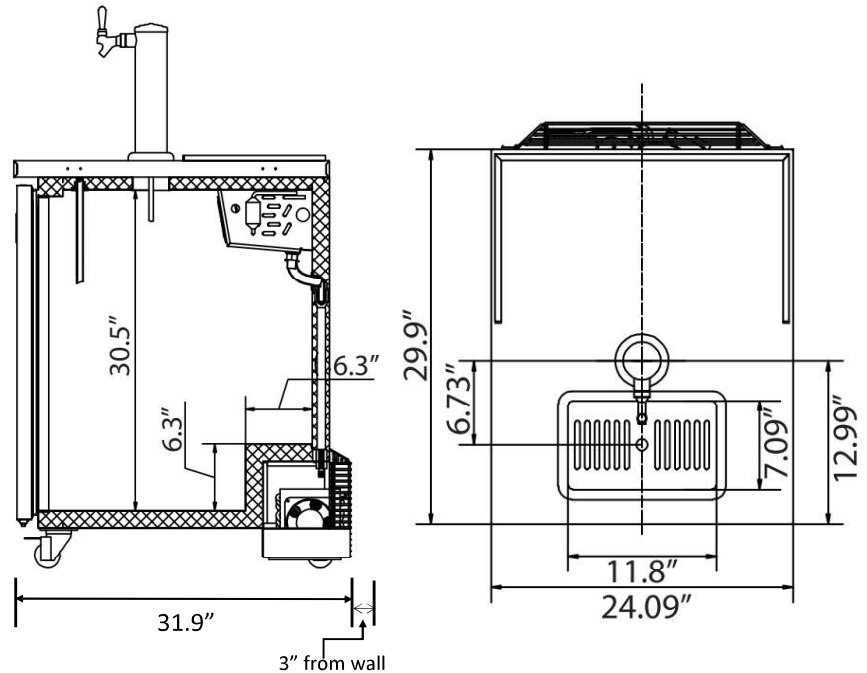
Temperature Range	33°F - 41°F
Refrigerant	R600a
Refrigerating System	Capillary Tube
Temperature Controller	Digital
Horsepower	1/8
Evaporator/Condenser	Aluminum + Copper

Construction Data

Exterior Material	Black Powder Coat Steel
Interior Floor Material	430 Stainless Steel
Interior Wall Material	430 Stainless Steel
Insulation	CFC Free Polyurethane
Doors	1 Hinged
Cooled Insulated Columns	1
Faucets	1

Electrical Data

Amps	2.2
Voltage/Frequency/Phase	115V/60Hz/1
Plug Type	NEMA 5-15P
Electrical Cord Length	8.2 ft.



Due to periodic changes in designs, procedures and regulations the specifications in these sheets are subject to change without notice. Ver. 201707



Intertek



Intertek

Certified to ANSI/NSF 7 Standards

Valpro Commercial Refrigeration
5256 Eagle Trail Drive
Tampa, FL 33634



Tel: 813-502-0300
1-888-VALPRO-8
www.valprorefrigeration.com