



Pizza Tables

ATPT-46 ATPT-67

STANDARD FEATURES

● DURABLE STAINLESS STEEL

Our megatops boast a sturdy stainless steel exterior and interior finish and galvanized back panel providing strength and durability.

● ERGONOMICALLY DESIGNED SOLID DOORS

Standard doors come with easy grip handles and self closing/120° stay open door feature, working together for customer convenience while ABS door liner provides thermal efficiency.

● MAGNETIC DOOR GASKET

Built of one piece, the gasket is removable without tools for ease of cleaning and replacement. Door's in step design gives added protection to the gasket.

● EFFICIENT REFRIGERATION SYSTEM

Factory engineered oversized and balanced refrigeration system. CFC-free R-134A Refrigerators maintain temperature from 33° to 38°F. Forced air design underneath pans to keep products fresh.

● FRONT BREATHING

Allows unrestricted placement of the unit.

● HIGH DENSITY POLYURETHANE INSULATION

2" CFC-free polyurethane insulation foamed in place for extra strength and energy efficiency, while being environmentally friendly with zero ozone depletion potential (ODP) and zero global warming potential (GWP).

● INSULATED LIDS

Removable insulated lids keep food fresh and cold by reducing condensation.

● REVERSIBLE & EASY CLEANING CUTTING BOARD

This 19" deep cutting board provides ample & comfortable operation space. Made of white polyethylene, it is also full length removable and reversible for durability and easy cleaning.

● STANDARD WITH FULL SETS OF 1/6th PANS, 4" DEEP



ATPT-46



ATPT-67

OPTIONS & ACCESSORIES

Additional epoxy coated shelves / 2.5" Casters /

6" Adjustable stainless steel legs / Factory reverse door hinging /
220V-50 cycles- 1 phase



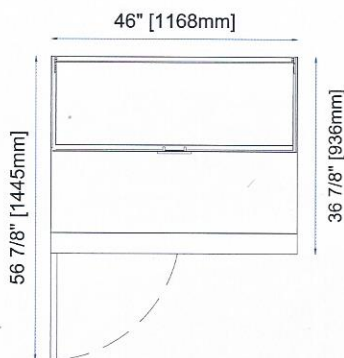
ISO 1400

ISO 9001

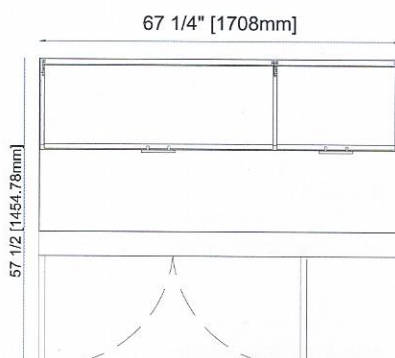
MODEL	DOORS	TOP PANS	SHLVs.	AMPS	HP	VOLTAGE	NEMA PLUG	CORD LENGHT	CABINET DIMENSIONS			SHIPPING	
									L	D	H*	Wt.	Cubes
REFRIGERATOR													
ATPT-46	1	6	2	5.4	1/4	115/60/1	5-15P	8'	46"	36-1/8"	39-1/8"	378	63
ATPT-67	2	9	4	6.5	1/3	115/60/1	5-15P	8'	67-1/4"	36-1/8"	39-1/8"	540	73

*Height does not include 5" overall for casters

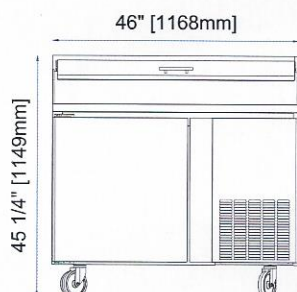
ATPT-46 Top



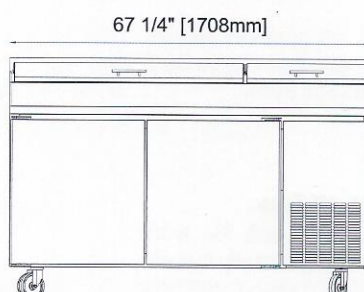
ATPT-67 Top



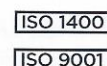
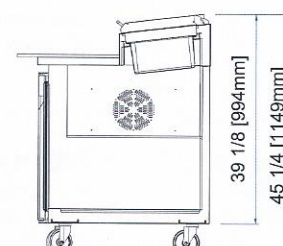
ATPT-46 Front



ATPT-67 Front



ATPT Common View



* Specifications

■ CABINET CONSTRUCTION

- EXTERIOR: Stainless steel, galvanized steel back.
- INTERIOR: Stainless steel.
- CABINET & DOOR: Entire foamed-in-place high-density, CFC-free, polyurethane insulation. Coved corner floor to meet NSF requirements.
- CASTERS: 4" Diameter swivel casters, front two with brakes.
- SHELVES: On a rail system that can also accommodate 12"x20" foodservice pans per door. Pans sold separately.

■ DOORS

- Stainless steel exterior with ABS interior liner.
- One piece constructions magnetic gasket, removable without tools for easy cleaning and replacement.
- Self-closing doors with 120° stay open feature and recessed handles for convenient loading and unloading.

■ REFRIGERATION SYSTEM

- Oversized and balanced refrigeration system.
- R-134A holding temperature at 33°F to 38°F Refrigerators.
- Self-contained capillary tube system using environmentally-friendly and CFC-free refrigerant.
- Front breathing allows unrestricted placement of the unit.
- Evaporator coil is mounted in the rear of the unit with full accessibility from the back.
- Large fan motor and fan blades for better air circulation.
- Self contained system, no plumbing necessary.
- Access for the condensing unit behind the front grill slides out for easy cleaning and maintenance.

■ ELECTRICAL

- The whole unit is completely pre-wired at factory with cord and plug set included and ready for final connection to a 115/60/1 phase.
- 220V / 50Hz / 1Ph available from factory.

■ WARRANTY

Continental USA & Canada:

- **One year** labor and parts warranty.
- **Five year** compressor warranty.
- **International:** one year parts only.